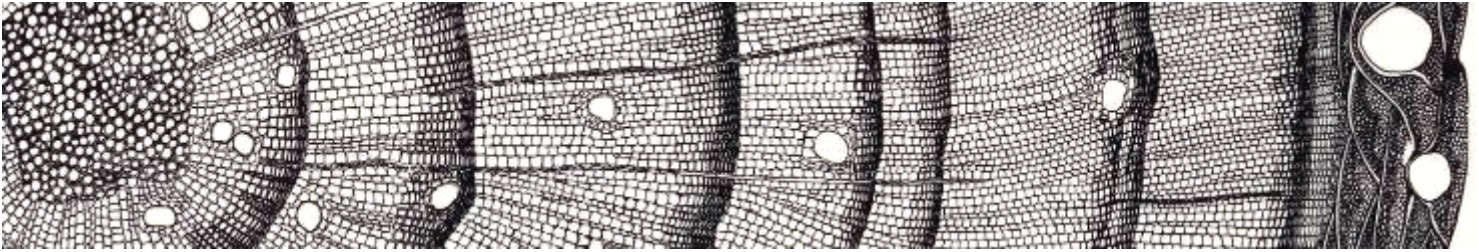


18th Annual North American Dendroecological Fieldweek (NADEF)

Apex Mountain, British Columbia

June 13th through June 21st



The 18th Annual North American Dendroecological Fieldweek (NADEF) will be held at the Double Diamond Hostel at Apex Mountain in British Columbia, Canada. The fieldweek will run from June 13th through June 21st and registration fees will be \$600 for students and \$750 for professionals. Students should send a photocopy of their student ID with their registration. Your registration fee includes room and board for the entire week and also transportation to and from the Vancouver International Airport (YVR) in British Columbia, Canada.

If you are interested in a place at the fieldweek or have any questions about the fieldweek please contact:

Jim Speer
Associate Professor of Geography and Geology
Indiana State University
Terre Haute, IN 47809
812-237-2257
jspeer3@indstate.edu

Send a check made out to **Indiana State University** to:

NADEF
Department of Environmental and Ecological Sciences
Indiana State University
Terre Haute, Indiana 47809-9989, USA
812-237-2501

The group leaders and projects are:

Introductory Group: Mark Spond & John Sakulich (University of Tennessee). This group will learn the basics of dendrochronology, including more time spent on site and tree selection, crossdating, detrending, and understanding chronology statistics. This group will take the time to survey the techniques of the other projects.

Dendroentomology: Rene Alfaro, Jodi Axelson (Canadian Forest Service) & Kathy Lewis (University of Northern British Columbia). This group will use tree rings to reconstruct a history of forest pest outbreaks. Candidate insects include Douglas-fir tussock moth, mountain pine beetle, and western spruce budworm.

Dendroecology: Amanda Stan (University of British Columbia). This group will sample living and subfossil wood to understand coarse woody debris dynamics.

Fire History: André Arsenault (British Columbia Forest Service) & Elaine Kennedy Sutherland (US Forest Service). This group will use fire scar and increment core samples to develop a fire history in a forest characterized by a mixed-severity fire regime.

Dendrogeomorphology: Dan Smith (University of Victoria). This group will reconstruct avalanche history using tree-ring techniques. Tree age and scar analysis of living and dead material will be used to estimate frequency-magnitude relationships.

Dendroclimatology: Ze'ev Gedalof (University of Guelph). This group will develop early- and late-wood chronologies using the WinDendro image analysis system in order to reconstruct selected climatic parameters over the past several centuries. Ideally these chronologies will provide a context for understanding the other group projects.

All groups will benefit from the oversight of Lori Daniels, Henri Grissino-Mayer, and Jim Speer.

Agenda

Friday June 13 th	Travel Day. Arrive at the Vancouver International Airport by 1pm for a shuttle to Apex Mountain. If you are providing your own transportation, meet us at the Double Diamond Hostel to check in by 5pm and dinner at the Gun Barrel Saloon at 6pm. You may arrive at the Double Diamond Hostel at any time on the 13 th if you want to settle in early and have first choice of rooms. Evening lecture: Personal introductions and introduction to dendrochronology.
Saturday June 14 th	Half day tour of the local area; introduction of the projects by the group leaders; lunch; split into groups; evening lecture/exercise on crossdating/skeleton plotting.
Sunday June 15 th	Field day: evening lecture.
Monday June 16 th	Field day/Laboratory day
Tuesday June 17 th	Laboratory day
Wednesday June 18 th	Laboratory day
Thursday June 19 th	Laboratory day
Friday June 20 th	Laboratory day; Afternoon presentation of projects (PowerPoint)
Saturday June 21 st	Breakfast at the Gun Barrel Saloon then travel day. Plan to leave the Vancouver International Airport around 3-4 pm.

Products

Each group will develop and present a PowerPoint presentation to all of the fieldweek participants. These presentations will subsequently be posted on the NADEF website. Each group will also produce a written report that will be compiled into the final report for the funding agencies and the field station.

Websites

North American Dendroecological Fieldweek: <http://dendrolab.indstate.edu/nadef/>

Double Diamond Hostel at Apex Mountain: <http://www.doublediamondhostel.com/>

Accommodations

We will be staying at the Double Diamond Hostel at Apex Mountain which is a new housing facility with wireless internet. The Hostel can sleep 110 people and they will be open exclusively for us during this off-season time for them. We will be eating at the Gun Barrel Saloon and our research space will be split between these two locations in the heart of this resort complex on Apex Mountain.

Travel

Flying

Fly into the Vancouver International Airport whose three letter designation is YVR. Congregate at the baggage claim and look for a sign that says NADEF. We will have two vans going out to Apex Mountain one at 11am and the other at 2pm. Please make sure to arrive in the morning if you can because it is a 4.5 hour drive out to the field station.

Driving

From Penticton

33 km, 30 minute drive from Penticton.

From the North or South of town, take the Chanel Parkway.

Turn on to Green Mountain Rd, following the Apex signs. This turn off has a bridge crossing the chanel, immediately followed by a Super Save Gas station.

Follow Green Mountain Road for approximately 22km.

Turn right at the intersection (Apex Guest Ranch) and drive another 11km to Apex.

Once on Green Mountain Road there will be very few signs & no street lights, don't worry, you are on the right road!

From Vancouver

4.5 Hours Driving Time. Scenic, sometimes winding mountain highway.

Trans Canada Highway #1 East to Hope, at interchange, take Highway #3 towards Princeton and Keremeos.

At Keremeos, turn left onto Highway #3A. From Bear's Fruit Stand on Highway #3A (you can't miss it, on your left)

Drive 11.5 km to the turn off to Green Mountain Rd. There is a highway sign and an Apex Billboard on your right as you get to a passing lane just before the turn off. The turn off is hard to see in the dark.

Stay on Green Mountain Rd for 14km until the intersection with Apex Mountain Rd (at the Apex Guest Ranch). Drive another 11km to the village entrance. Follow the signs toward the Village Centre.

From Seattle

6 Hours Driving Time. 505 kms

Drive North on I-5 to Bellingham and exit on Highway 542. Drive northeast through Lynden to cross the border at Sumas.

Trans Canada Highway #1 East to Hope, at interchange, take Highway #3 towards Princeton and Keremeos.

At Keremeos, turn left onto Highway #3A. From Bear's Fruit Stand on Highway #3A (you can't miss it, on your left) drive 11.5 km to the turn off to Green Mountain Rd. There is a highway sign and an Apex

Billboard on your right as you get to a passing lane just before the turn off. The turn off is hard to see in the dark. Stay on Green Mountain Rd for 14km until the intersection with Apex Mountain Rd (at the Apex Guest Ranch). Drive another 11km to the village entrance. Follow the signs toward the Village Centre.

From Spokane

4 Hours Driving Time 380 kms.

Drive West to Highway #97. North to Oroville, cross border to Osoyoos.

Stay on Highway #97 North to Penticton.

As you approach Penticton, pass the airport on your left, the next light, turn left onto the Channel Parkway By Pass.

At the first light, turn left onto Green Mountain Road following the Apex signs. This turn off has a bridge crossing the chanel, immediately followed by a Super Save Gas station.

Follow Green Mountain Road for approximately 22km.

Turn right at the intersection (Apex Guest Ranch) and drive another 11km to Apex.

From Calgary

8 Hours Driving Time 710 kms.

Take Trans Canada Highway #1 West through Banff and Golden to Sicamous.

Turn left onto Highway #97 South, follow this highway through Vernon and Kelowna to Penticton.

As you approach Penticton, at the second set of lights, turn right onto the Channel Parkway By Pass.

At the second set of lights turn right onto Green Mountain Road towards Apex Mountain Resort.

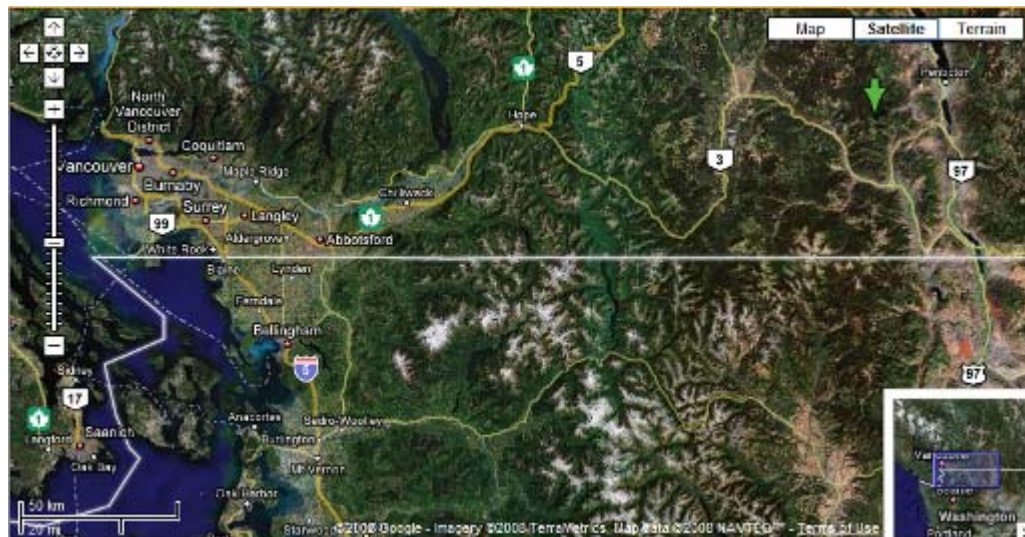
following the Apex signs. This turn off has a bridge crossing the chanel, immediately followed by a Super Save Gas station.

Follow Green Mountain Road for approximately 22km.

Turn right at the intersection (Apex Guest Ranch) and drive another 11km to Apex.



Figure 1. Apex Mountain Resort with the Double Diamond Hostel on the right.



From Google Maps

Figure 2. Southern British Columbia and Northern United States. Apex Mountain is marked by the arrow on the upper right side of the image.